

# StrataLink



*You've never had a better option.  
Until StrataLink.*

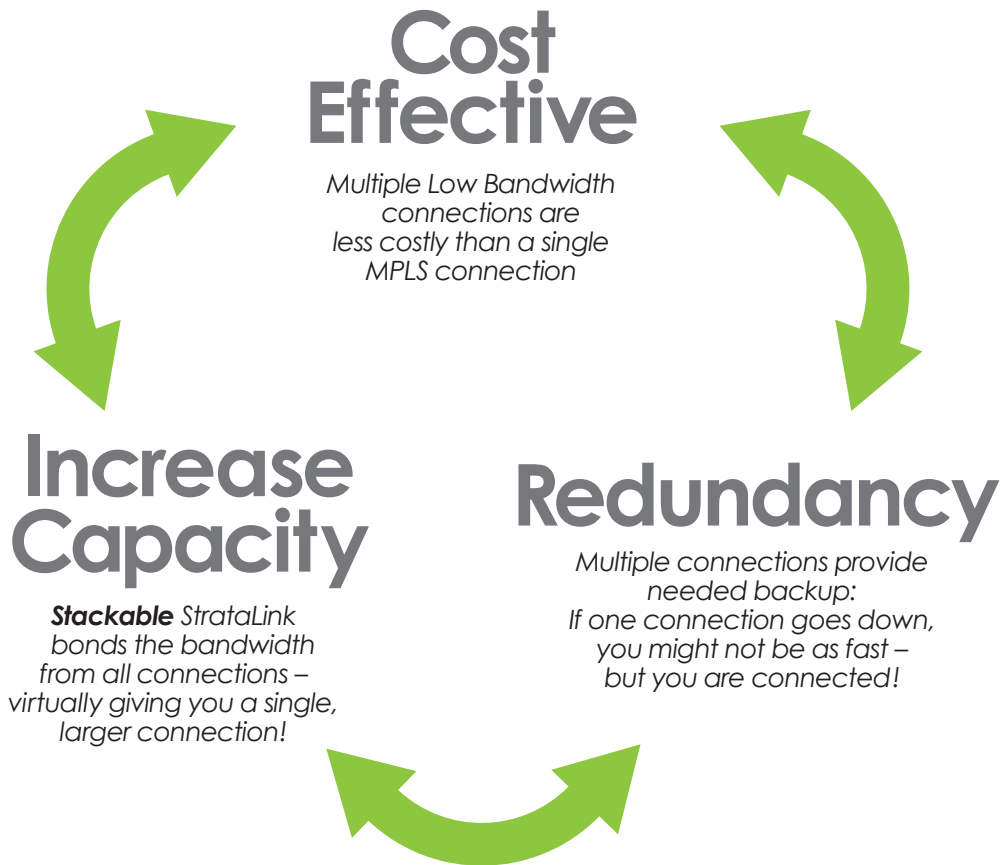
Leased lines like MPLS, T1 or T3 are great for adding reliability, but the costs can be prohibitive if you want serious bandwidth.

And with a single line, there's no redundancy. If the line fails - you're in the digital dark!

Until now you really didn't have any other, better choices.

Introducing the benefits of **StrataLink**.

*This diagram illustrates the "Circle of Benefits" and Savings that StrataLink can deliver to you.*



**StrataLink Reduces Cost, Provides Backup and Increases Capacity Through Stacking**

**PLEASE CONTACT US FOR MORE INFORMATION: (888) 777-5049 or [info@StrataPointe.com](mailto:info@StrataPointe.com)**

Strata Pointe Technologies • 118 Rochester Drive • Louisville, Kentucky 40214



# StrataLink

*Your Network, But Better.*

## Save Money. Reduce Complexity. Improve Performance.

Software-defined wide area networking (SD-WAN) is the next evolution of private networking. It drives sweeping changes to an organization's ability to procure and administer a corporate network.

What's more, SD-WAN allows branch locations to leverage bandwidth-intensive applications that were previously restricted to larger hub offices.

SD-WAN uses software to automate the ongoing configuration of edge routers and push traffic over a mix of private, wireless and broadband network access. At a time when applications within the enterprise are exploding, SD-WAN offers a real network solution for businesses trying to keep up with the impact a highly dynamic application environment has on their network quality of service.

No brainer, right? Not so fast. Simply adding the SD-WAN software to an existing environment doesn't remove the complexity of legacy networks.

## StrataLink: SD-WAN by Strata Pointe. It's Different.

**StrataLink**, our SD-WAN, combines Strata Pointe's network design and management expertise with leading software controls and the ubiquity of any connection type, or any vendor.

The result? **Improved flexibility through greater bandwidth that delivers increased visibility into network usage and vastly simplified control.**

**StrataLink** allows you to:

- Reduce your monthly networking cost
- Add new locations without a lengthy deployment window
- Optimize bandwidth by reducing reliance on private MPLS links
- Support bandwidth-intensive applications and workloads
- Increase security through encrypted WAN traffic, greater traffic visibility and segmented network workloads
- Reduce complexity & maintenance with simplified remote office CPE requirements and fewer site visits
- Align network services to user and application needs while gaining visibility into network use

**PLEASE CONTACT US FOR MORE INFORMATION:**

**(888) 777-5049 or [info@StrataPointe.com](mailto:info@StrataPointe.com)**



# StrataLink

*Delivering increased bandwidth, reliability  
and redundancy –  
Without breaking the bank!*

## Best option, best price!

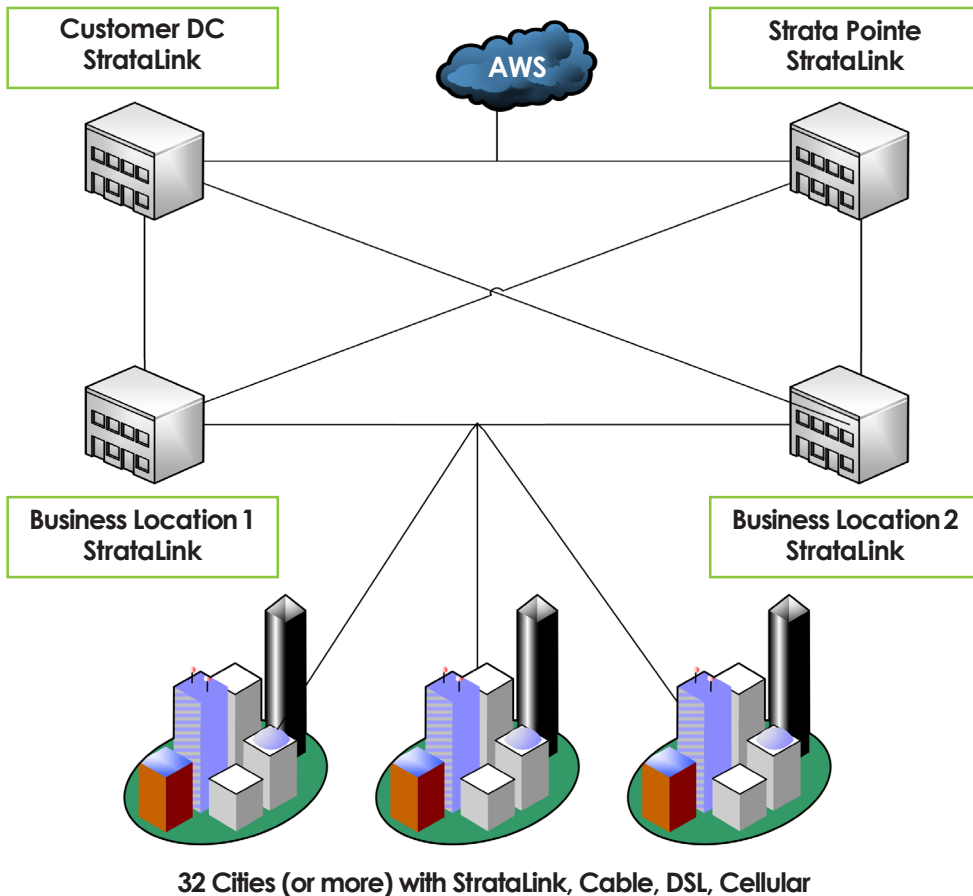
Leased lines like MPLS, T1 or T3 are great for adding reliability, but the costs can be prohibitive if you want serious bandwidth.

And with a single line, there's no redundancy. If the line fails - you're in the digital dark!

We bundle inexpensive and readily available connections like DSL, cable modems, 3G/4G mobile and/or lease lines to create an *aggregated solution*.

Without question, one of the **best ways to add speed, redundancy and cost savings** is by **bundling multiple internet connections together with StrataLink by Strata Pointe**.

*This diagram illustrates the powerful benefits & savings delivered to one of our current StrataLink Customers*



**\$ 6,000 Savings Per Month with 6 Added Locations Over MPLS and Full Redundancy**





**PLEASE CONTACT US FOR MORE INFORMATION: (888) 777-5049 or [info@StrataPointe.com](mailto:info@StrataPointe.com)**

Strata Pointe Technologies • 118 Rochester Drive • Louisville, Kentucky 40214

# StrataLink

## Feature Matrix



Features	SOHO	S-2	S-21	S-38	S-58	S-71	S-135
							
Customer Group	Home Office	Small Business		Mid-Size Business		Large Enterprise	
<b>Capacity</b>							
WAN Ports / Internet Links	1	2	2	3 (GbE)	5 (GbE)	7 (GbE)	13 (GbE)
Recommended Users	1-10	1-25	1-50	50-500	300-1000	500-2000+	1000-5000+
Strata Cellular WAN Capable	Yes	Yes	Yes	Yes	Yes	Yes	Yes
<b>Core Functionality</b>							
Load Balancing & Failover	Yes	Yes	Yes	Yes	Yes	Yes	Yes
Drop-In Mode	X	X	Yes	Yes	Yes	Yes	Yes
Inbound Load Balancing	X	X	Yes	Yes	Yes	Yes	Yes
<b>VPN Functionality</b>							
Bandwidth Bonding	X	X	Yes	Yes	Yes	Yes	Yes
Number of Bonded Peers	X	X	2	20	50	300	800
Recommended PPTP VPN Users	3	15	15	50	100	200	500
Number of IPsec Tunnels	2	2	2	20	50	150	400
<b>Advanced QoS Functionality</b>							
QoS for VoIP	Yes	Yes	Yes	Yes	Yes	Yes	Yes
Application Prioritization	X	X	Yes	Yes	Yes	Yes	Yes
Application Prioritization by User Group	X	X	X	Yes	Yes	Yes	Yes
User Group Bandwidth Reservation	X	X	X	Yes	Yes	Yes	Yes
Individual Bandwidth Limit	X	X	X	Yes	Yes	Yes	Yes
<b>Hardware Features</b>							
LAN Ports	4 (GbE)	4 (GbE)	4 (GbE)	1 (GbE)	1 (GbE)	1 (GbE)	1 (GbE)
1U Rackmount	X	X	Yes	Yes	Yes	Yes	Yes
High Availability	X	X	Yes	Yes	Yes	Yes	Yes
StrataNET 3-Year Contract	\$40.00	\$70.00	\$225.00	\$340.00	\$410.00	\$490.00	\$560.00
All Prices are Monthly							

**PLEASE CONTACT US FOR MORE INFORMATION:**  
**(888) 777-5049 or [info@StrataPointe.com](mailto:info@StrataPointe.com)**

Strata Pointe Technologies • 118 Rochester Drive • Louisville, Kentucky 40214